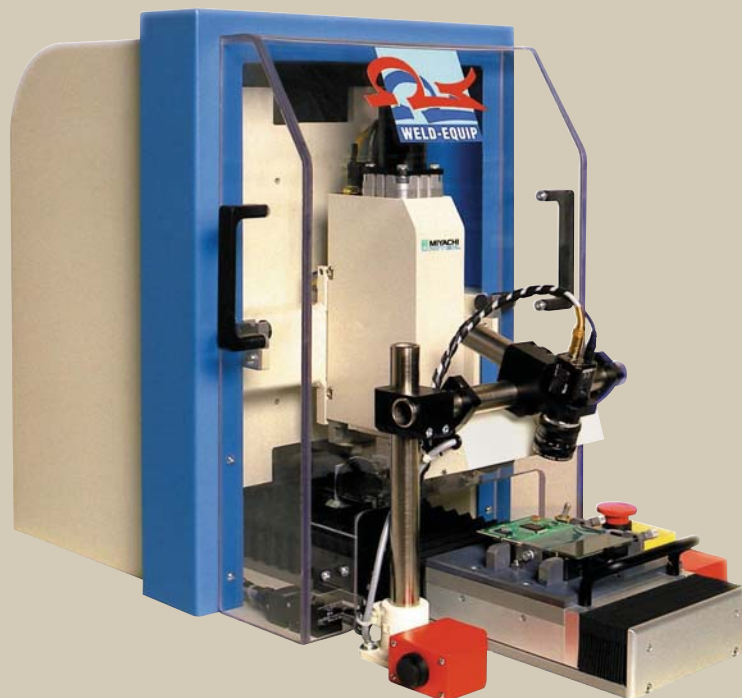


hot-bar systems

Uni-Slide Manual, Stand-Alone Heat-Seal System

This stand-alone bonding system is designed for maximum flexibility to meet low volume, high mix production requirements and is also ideal for development work. Utilizing a force controlled pneumatic head and Thermo-plane thermode technology, the Uni-Slide produces extremely reliable and consistent results according to the highest industrial standards.

- LCD to Flex, LCD to PCB
- Mobile Phones, Laptop Computers
- Automotive Applications, Consumer Electronics, and Many More



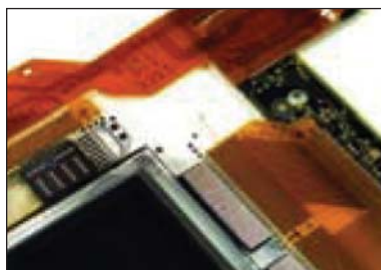
Key Features

- Uniflow® pulse-heated control with graphical data output and remote programming provides targeted heating and precision temperature controls
- Manual slide with multiple stop positions for camera alignment or multiple connections in parallel. Correct sealing positions are sensor monitored.
- High precision pneumatic operated head ensures consistent results with even the finest pitch applications.
- Pulse-heated Thermo-Plane thermode offers uniform temperature distribution, optimal flatness and fast heating and cool-down
- Quick connect block enables fast and easy thermode changes.
- Open gantry construction can accommodate products up to 400mm wide.
- Start button and protective shield for operator safety.
- CE approved

Options include:

- Manual interlayer system
- Customized product fixtures
- Fine pitch optical alignment
- High force pneumatic head

TYPICAL APPLICATIONS



Flat panel display drivers



LCD-flex-PCB



Digital dashboard

SYSTEM SPECIFICATIONS

Dimensions Inches (mm) D x W x H	34.0 x 49.0 x 61.0 (860 x 1250 x 1550)
Weight Lbs. (kg)	396 (180)
Power Consumption	240 Vac, 50/60Hz, 16 Amp max (upon request, also available in 110 Vac version)
Air Supply	80-100 psi (6 bar) dry and filtered air
Maximum Fixture Height Inches (mm)	2.0 (50)
Gantry Open Width Inches (mm)	16.5 (420)
Accuracy Inches (mm)	0.001 (0.05)
Starting Operation	CE certified 2-hand relay control
Operating Temperature	60-104°F (15-40°C)

BONDING HEAD SPECIFICATIONS

Head Module	SH500	SH1250
Force Range Lbs. (N)	7-112 (30-500) [3-51 Kgf]	56.2-281 (250-1250) [25.5-127.5 Kgf]
Hot Bar Stroke Inches (mm)	.98 (25.0)	
Appropriate Quick Connect Thermode Blocks	69Q9001	69Q9002
Appropriate Thermodes	Thermo-Plane (to suit application)	
Maximum Thermode Length Inches (mm)	1.7 (Up to 50)	3.94 (Up to 100)
Thermocouple Type	K-type	
Force Generation	Pre-tensioned spring	
Force Accuracy Inches (N)	± 2% or ± .44 (2)	±2% or 1.32 (6)
Force Repeatability Inches (N)	± 1% or ± .22 (1)	±2% or .66 (3)

UNIFLOW PULSED HEAT SPECIFICATIONS

Weight Lbs. (kg)	58 (26.31)
Dimensions Inches (mm) D x H x W	16.2 x 12.6 x 9.7 (411 x 319 x 246)
Temperature Range Preheat	140-572°F (60-300°C)
Temperature Range Preheat	140-1112°F (60-600°C)
Time Period Preheat	0-99.9 seconds or continuous (0.1 second increments)
Time Period Rise Time	0-9.9 seconds (0.1 second increments)
Time Period Heat Time	0.1-99.9 seconds (0.1 second increments)
Temperature Accuracy	±2% or readying or 10°F (6°C), whichever is greater
Temperature Repeatability	±1% of reading
Heating Rate Control	Coarse adjustment and fine adjustment via set-up software
Programmable Heat Profiles	Fifteen (15) non-volatile memory
Dedicated Input Relays	24Vac / 0.3Amp
Head Cool Relay	ON/OFF for cooling thermode holder
Solder Cool Relay	ON @ COOL, OFF @ PREHEAT
Programmable Relays	4 each, electromechanical (24 Vac or 24 Vdc/0.3 Amp)
Programmable Relay Functions	Reflow, preheat, alarm, clean thermode, replace thermode, end reflow, head is up, system ready
Communication Ports	RS-232, RS-485

Your Local Representative



Yaylagül Sk. 8/4. Aşağı Ayrancı 06540 ANKARA - TÜRKİYE
Tel: +90 (312) 468 8114 Faks: +90 (312) 468 8115
<http://www.esenel.com> eposta@esenel.com



EASTERN (USA)

Sales Office:
170 Cross Street
Boylston, MA 01505
Tel: (508) 869-0583
FAX: (508) 869-0585
E-Mail: eastsales@miyachiunitek.com

ASIA Sales Office:

Unit D, 20/F, Infotech Centre
21 Hung To Road
Kwun Tong, Hong Kong
Tel: +852 2833-6998
FAX: +852 2833-6672
E-Mail: asiapacific@miyachiunitek.com

Corporate Office: 1820 S. Myrtle Ave. • P.O. Box 5033 • Monrovia, CA 91017-7133 USA
Tel: (626) 303-5676 • FAX: (626) 358-8048 • E-Mail: info@miyachiunitek.com
Internet <http://www.miyachiunitek.com> • ISO 9001 Certified Company

UNITEK EAPRO (Europe):

Schootense Dreef 21
NL-5708 HZ Helmond
The Netherlands
Tel: +31 492-54-22-25
FAX: +31 492-53-62-22
E-Mail: info@unitekeapro.com

SOUTH AMERICA Sales Office:

Av. Raimundo Pereira de Magalhães
1720 – Edifício Via Fratelli, sl 163
São Paulo – SP /Brazil 05145-200
Tel/FAX: 55+ (11)3834.7245
Mobile: 55+ (11) 8389.8490
E-Mail: edson.urtado@miyachiunitek.com

MEXICO Sales Office:

Pedro Rosales de Leon 7946-200
Fraccionamiento Las Misiones
Ciudad, Juarez, Chihuahua Mexico
Tel: +52.656.623.2719
FAX: +52.656.617.6058
E-Mail: Jaime.morales@miyachiunitek.com

Specifications subject to change without notice.
Copyright© 2006 Miyachi Unitek Corporation. The material contained herein cannot be reproduced or used in any other way without the express written permission of Miyachi Unitek Corporation. All rights reserved.